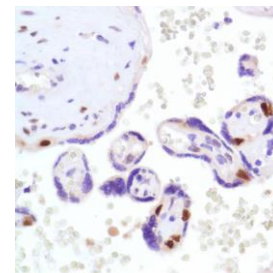




## Rabbit Anti-Human p57 Monoclonal Antibody (Clone SP118)

### CATALOG #:

- M4180** 0.1 ml rabbit monoclonal antibody purified by protein A/G in PBS/1% BSA buffer pH 7.6 with less than 0.1% sodium azide.
- M4182** 0.5 ml rabbit monoclonal antibody purified by protein A/G in PBS/1% BSA buffer pH 7.6 with less than 0.1% sodium azide.
- M4184** 1.0 ml rabbit monoclonal antibody purified by protein A/G in PBS/1% BSA buffer pH 7.6 with less than 0.1% sodium azide.
- M4181** 7.0 ml pre-diluted rabbit monoclonal antibody purified by protein A/G in TBS/1% BSA buffer pH 7.6 with less than 0.1% sodium azide.



*Human placenta stained with anti-p57 antibody*

### INTENDED USE:

For Research Use Only. Not for use in diagnostic procedures.

### CLONE:

SP118

### IMMUNOGEN:

Synthetic peptide corresponding to an internal region of human P57 protein.

### IG ISOTYPE:

Rabbit IgG

### EPITOPE:

Not determined

### MOLECULAR WEIGHT:

32 kDa

### SPECIES REACTIVITY:

Human (tested). (See [www.springbio.com](http://www.springbio.com) for information on species reactivity predicted by sequence homology.)

### DESCRIPTION:

Cyclin-dependent kinase inhibitor 1C (CDKN 1C or p57/Kip2) is a nuclear protein and a potent inhibitor for several G1 cyclin/Cdk complexes. P57 inhibits cell proliferation and the mutation of P57 gene can lead to uncontrollable cell growth and malignancy such as hydatidiform mole.

### APPLICATIONS:

Immunohistochemistry (IHC)

### IHC PROCEDURE:

**Specimen Preparation:** Formalin-fixed, paraffin-embedded tissues are suitable for use with this primary antibody.

**Deparaffinization:** Deparaffinize slides using xylene or xylene alternative and graded alcohols.

**Antibody Dilution:** If using the concentrate format of this product, dilute the antibody 1:100. The dilutions are estimates; actual results may differ because of variability in methods and protocols.

**Antigen Retrieval:** Boil tissue section in EDTA buffer for 10 min followed by cooling at room temperature for 20 min.

**Primary Antibody Incubation:** Incubate for 10 minutes at room temperature.

**Slide Washing:** Slides must be washed in between steps. Rinse slides with PBS/0.05% Tween.

**Visualization:** Detect the antibody as instructed by the instructions provided with the visualization system.

### POSITIVE CONTROL:

Placenta

### CELLULAR LOCALIZATION:

Nucleus

### STORAGE & STABILITY:

Store at 2-8°C. Do not freeze. The user must validate any other storage conditions. When properly stored, the reagent is stable to the date indicated on the label. Do not use the reagent beyond the expiration date.

There are no definitive signs to indicate instability of this product; therefore, positive and negative controls should be tested simultaneously with unknown specimens.

If unexpected results are observed which cannot be explained by variations in laboratory procedures and a problem with the reagent is suspected, contact Technical Support at [spring.tech@ventana.roche.com](mailto:spring.tech@ventana.roche.com).

### WARNINGS & PRECAUTIONS:

1. Avoid contact of reagents with eyes and mucous membranes. If reagents come into contact with sensitive areas, wash with copious amounts of water.
2. This product is harmful if swallowed.
3. Consult local or state authorities with regard to recommended method of disposal.
4. Avoid microbial contamination of reagents.